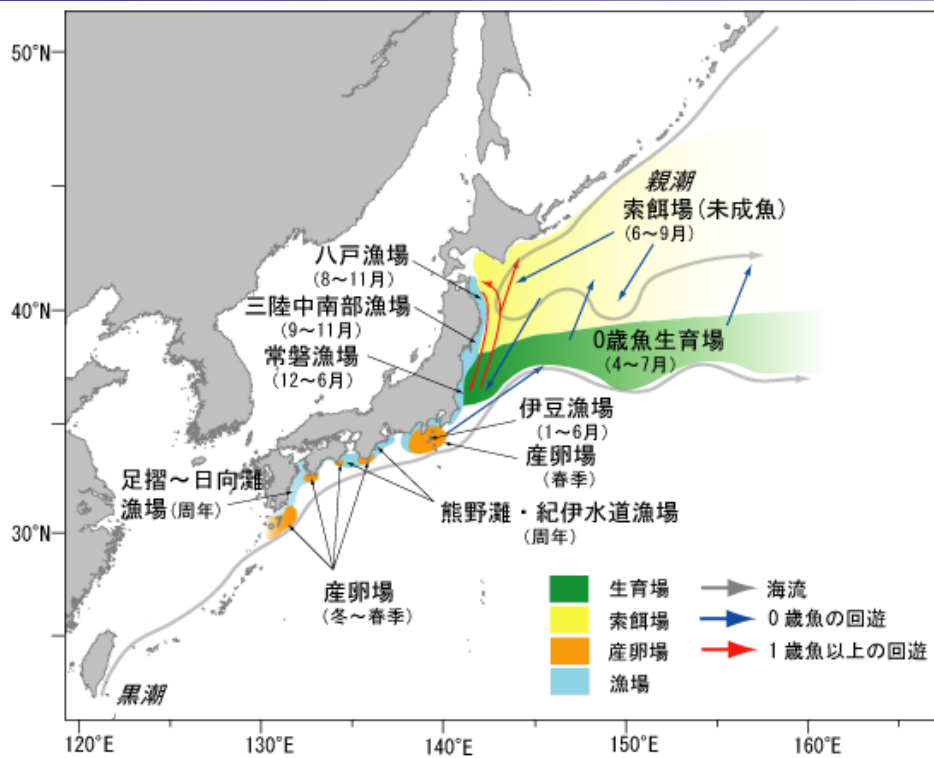
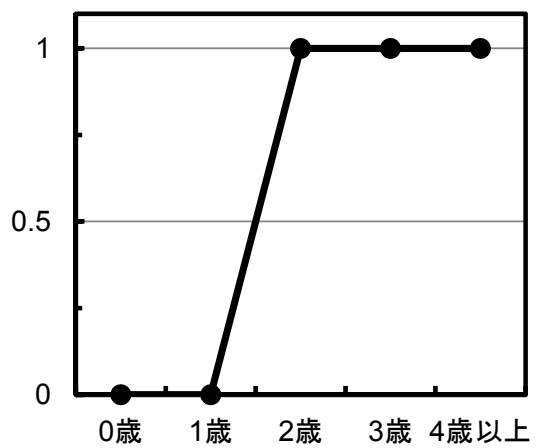
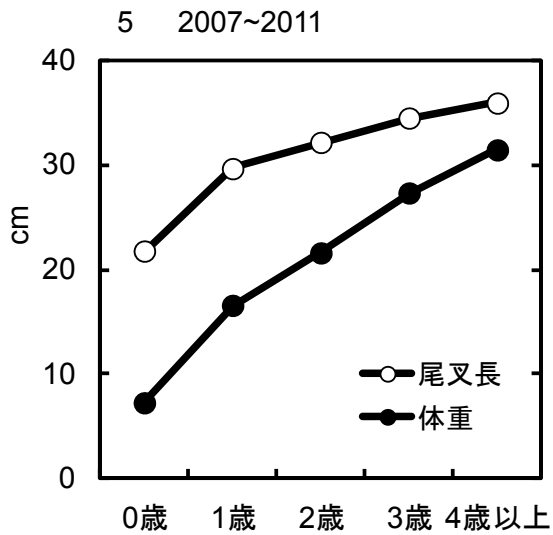




25



12 6



6

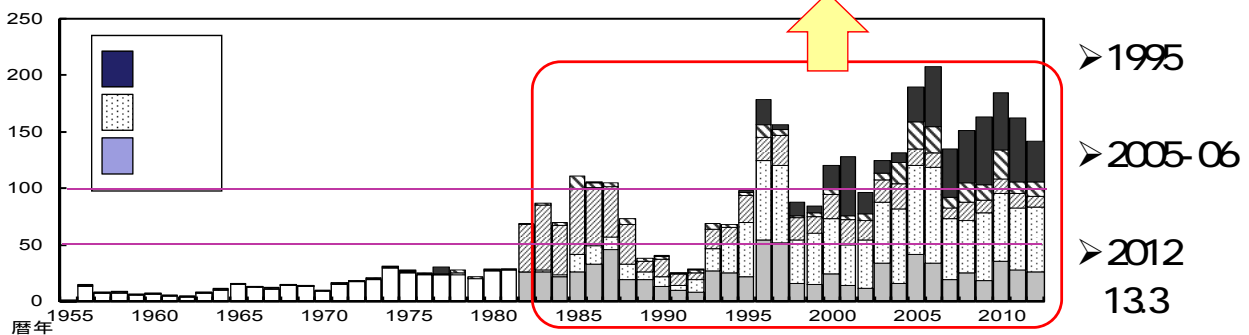
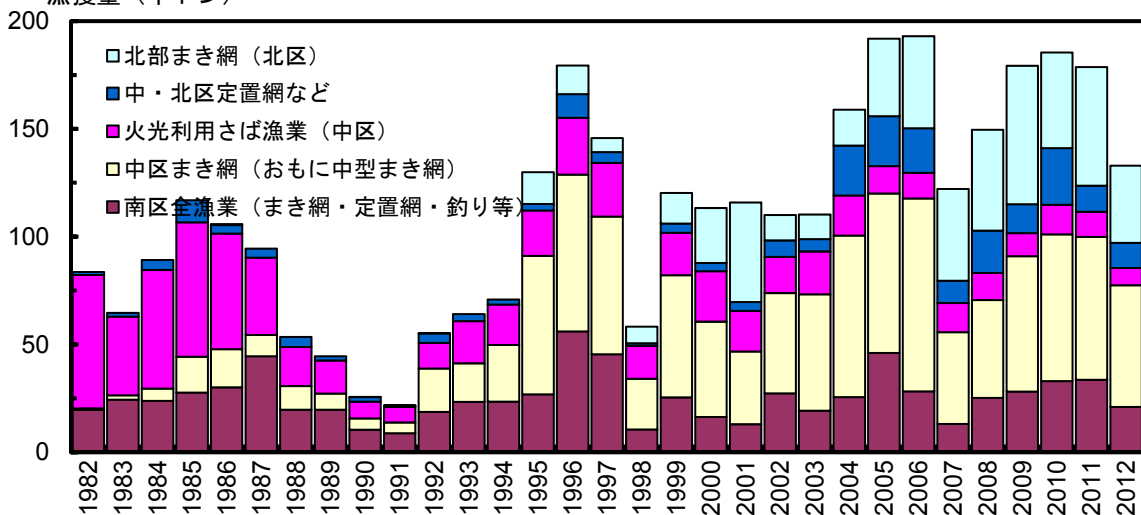
45 cm

2

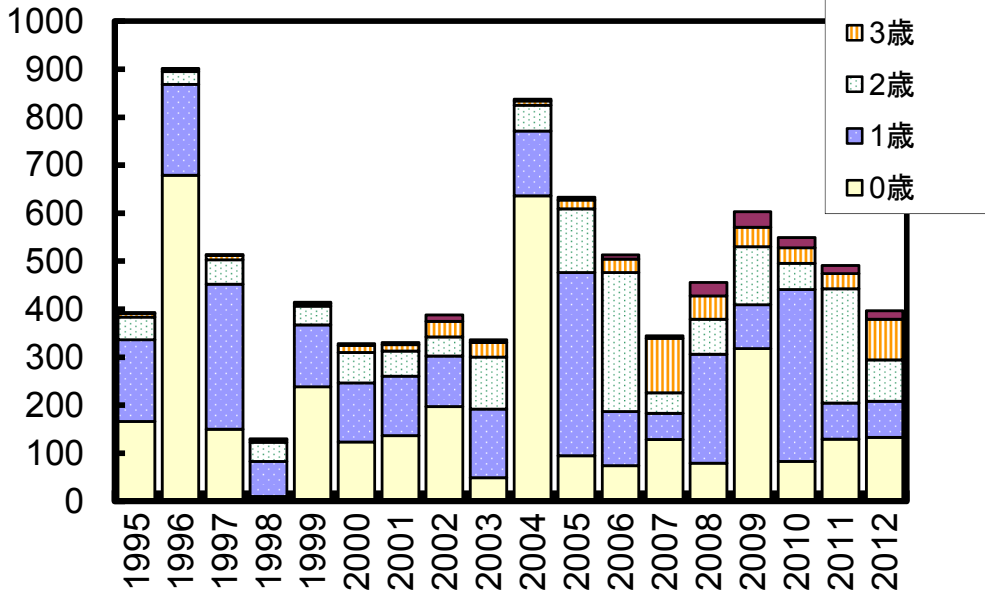
100%

( 30 cm )

漁獲量 (千トン)

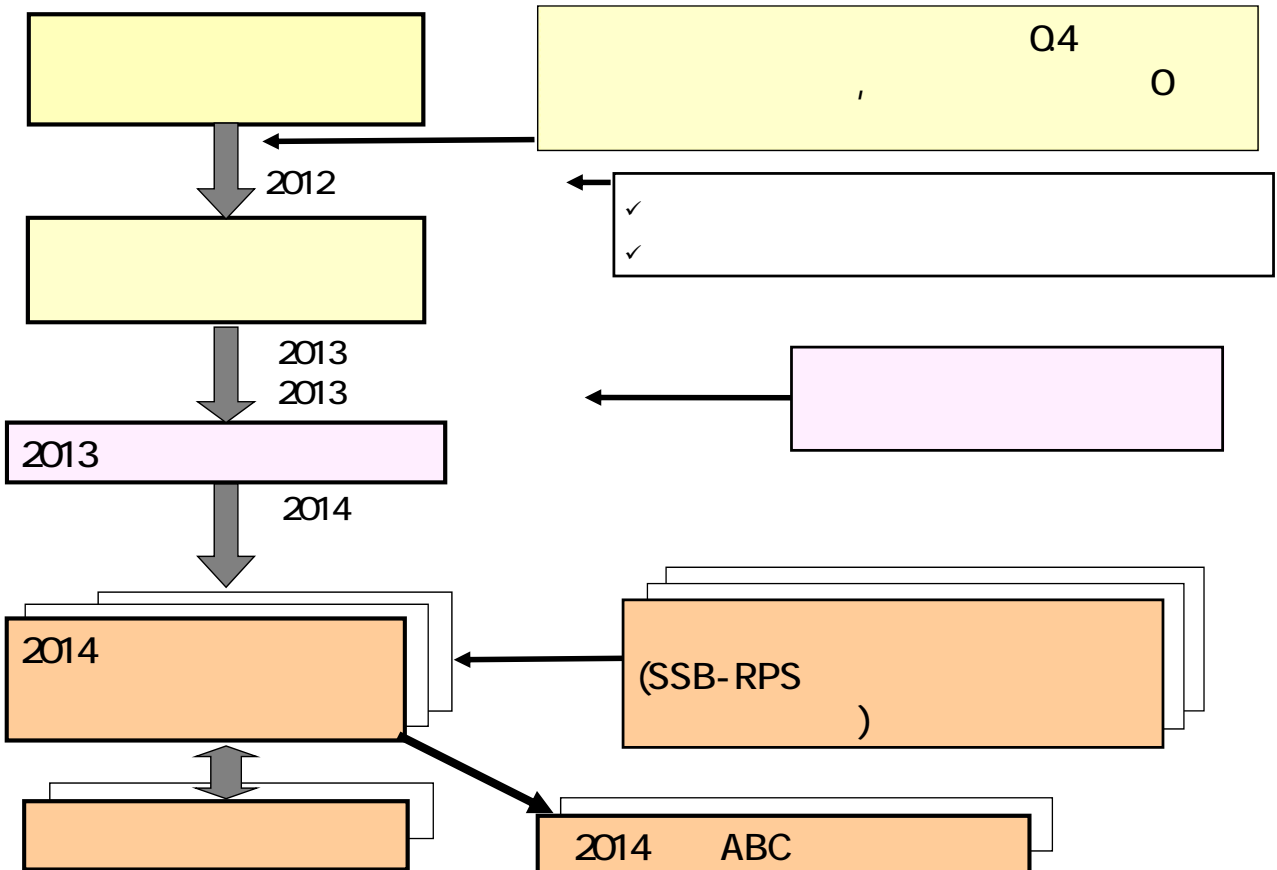


漁獲尾数 (100万尾)

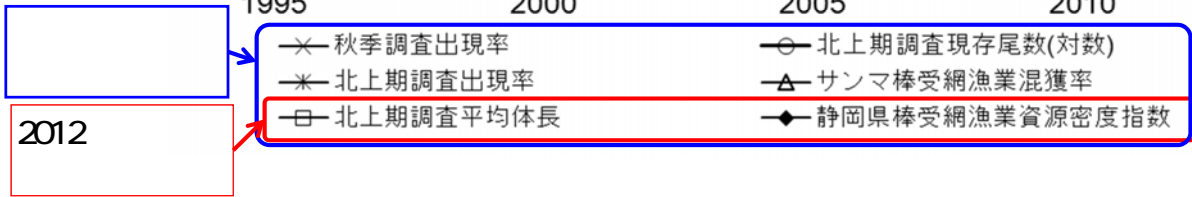
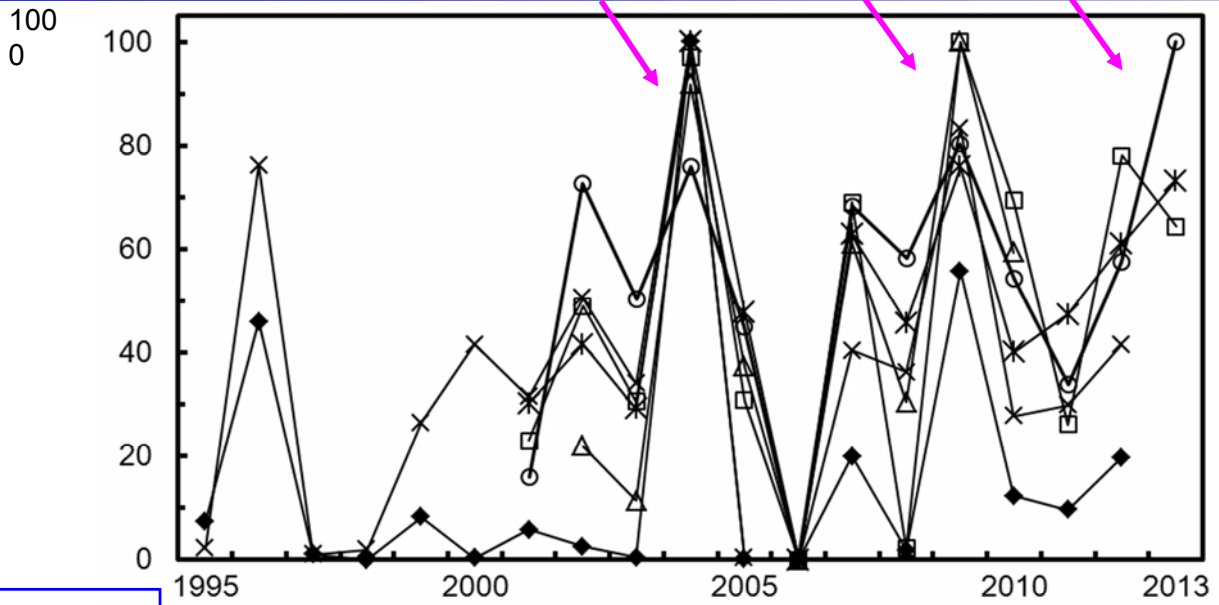


- - 
  - 2012
- 1 2
- 0 1 0
- 3 2
- 0

⇒ ⇒ABC



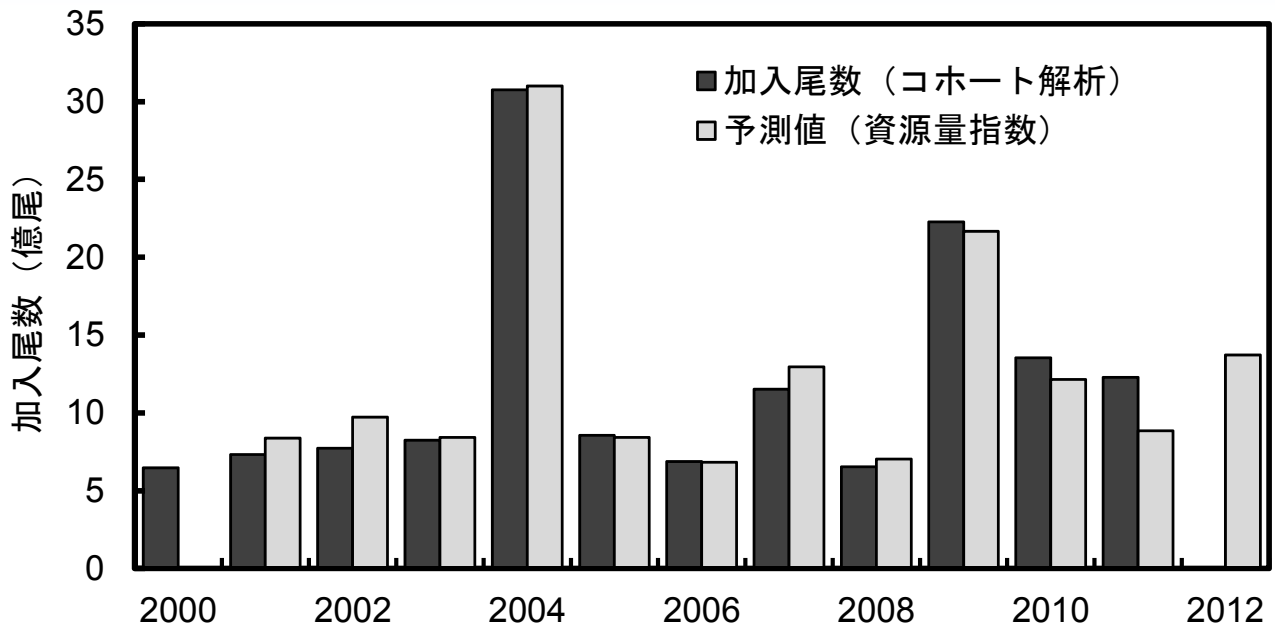
0



2012

- 1996 2004 2009 2006 2008
- 2013

2012



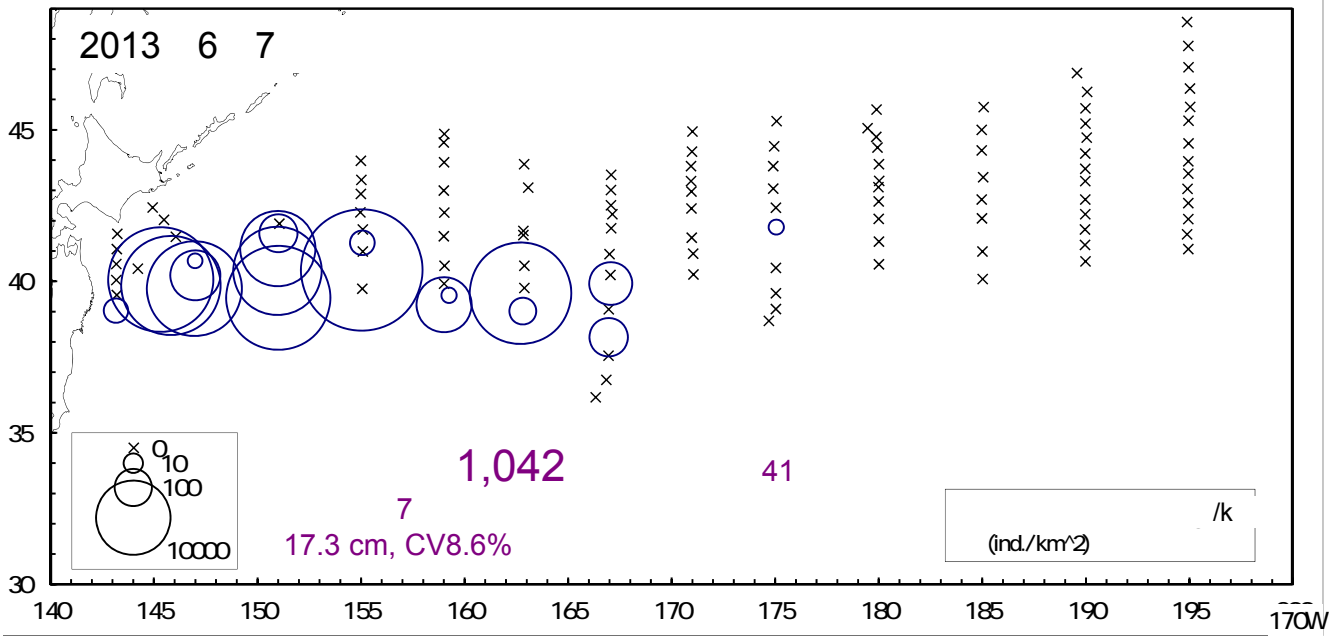
2012 4.0

2

7

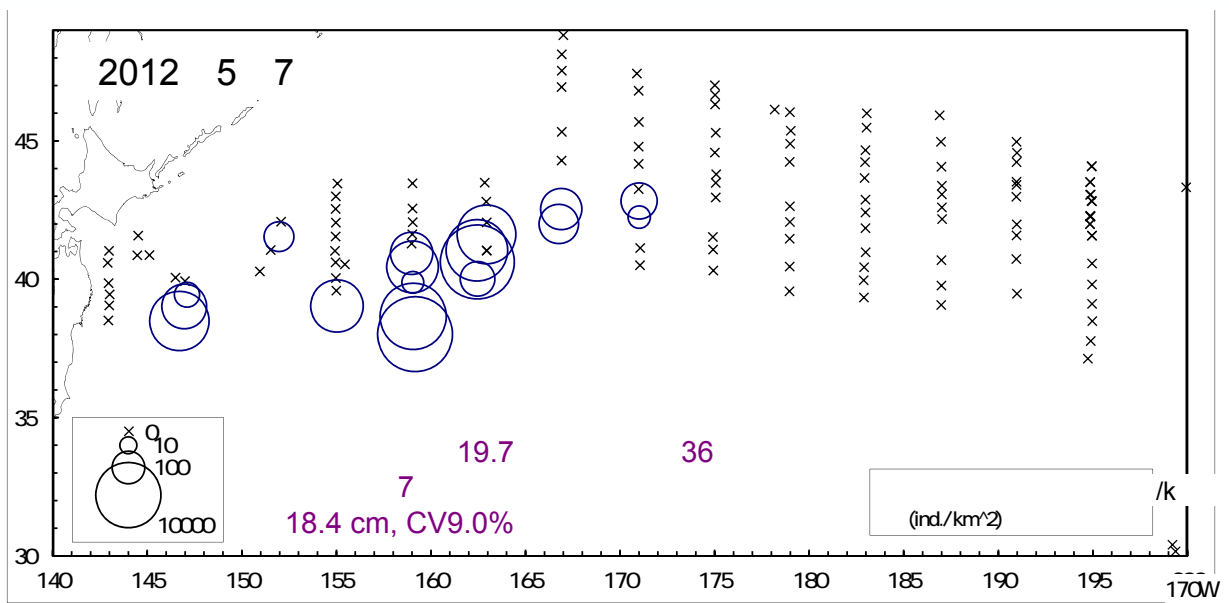
CPUE

2013

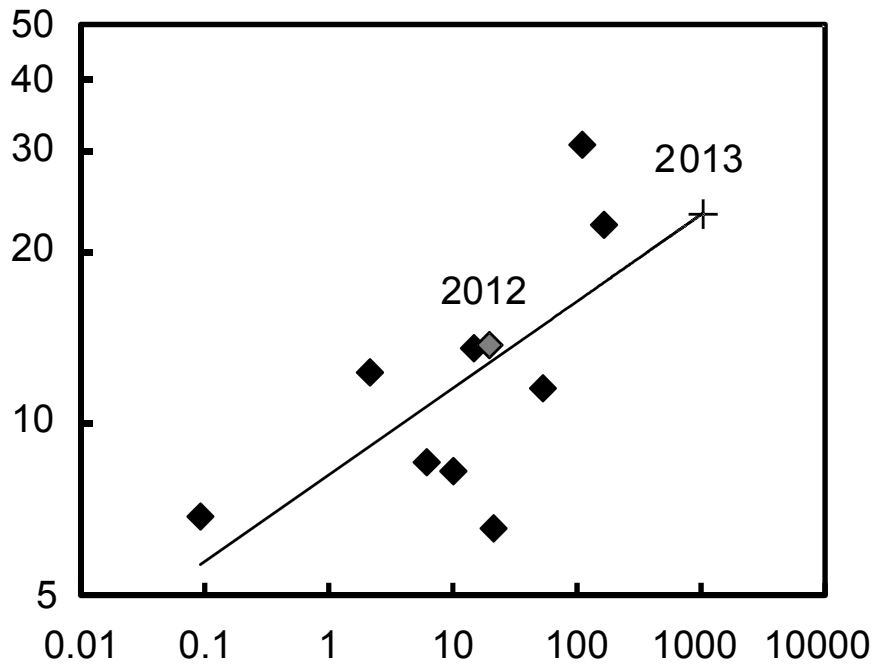


CV

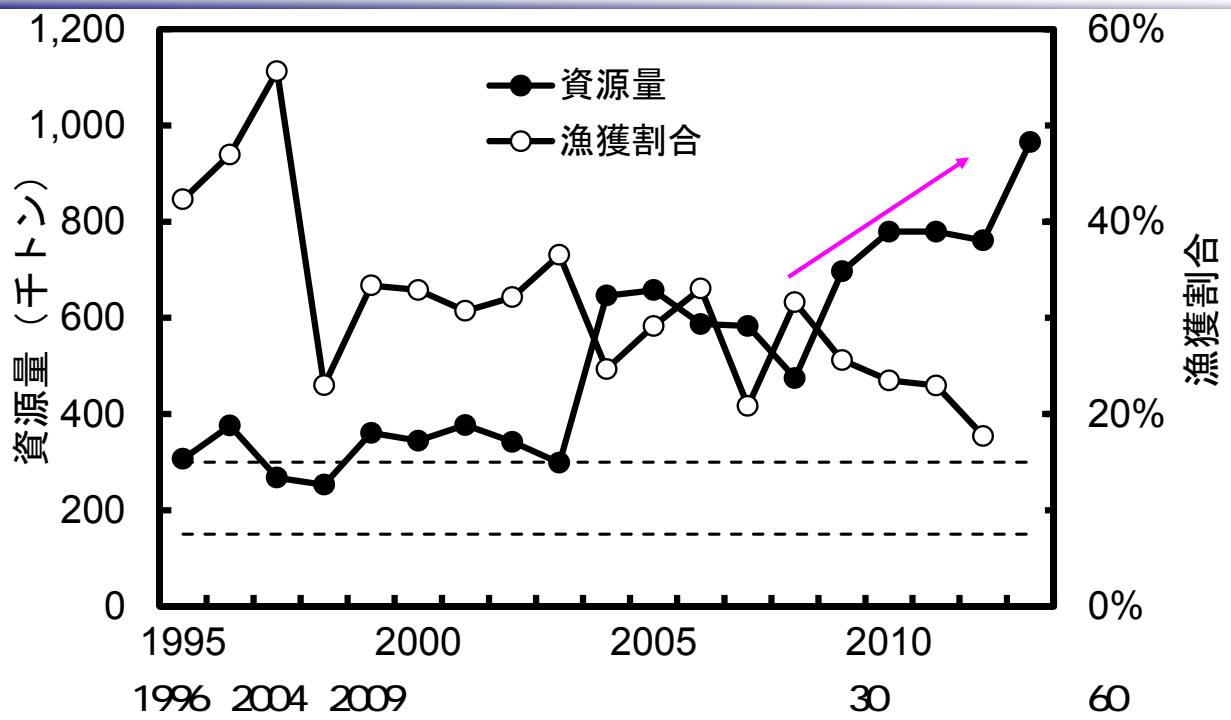
2012



CV



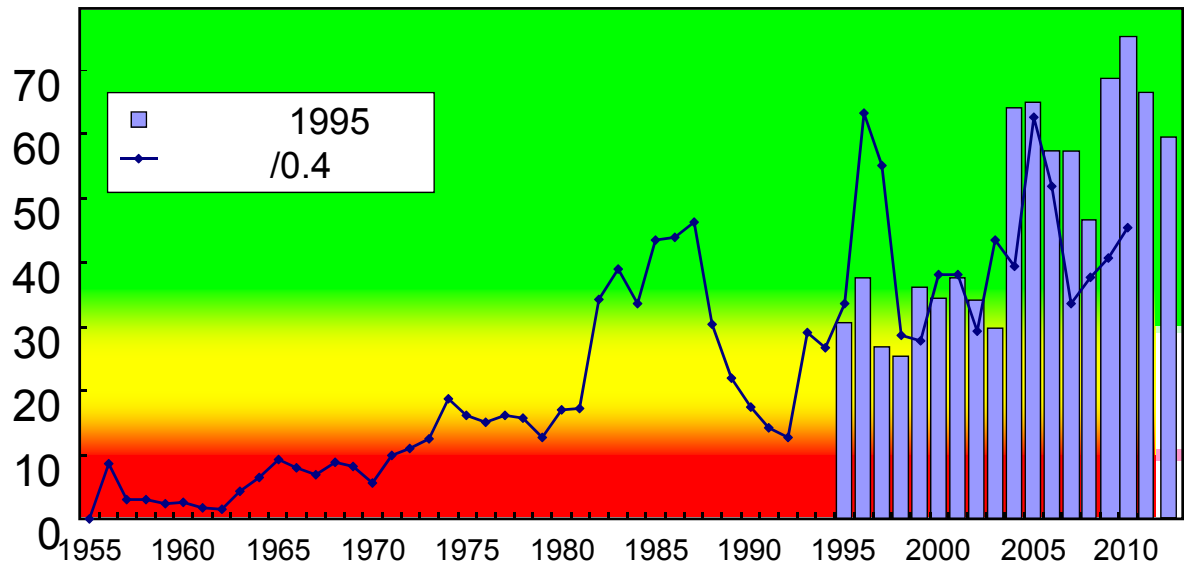
2013



2012 77.9  
1998 30%

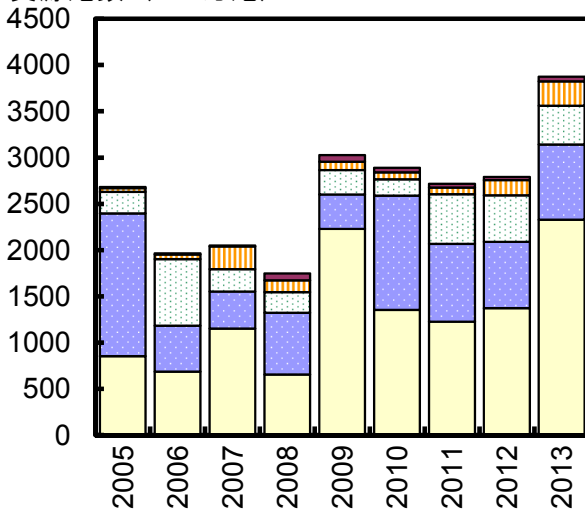
2013

5 7

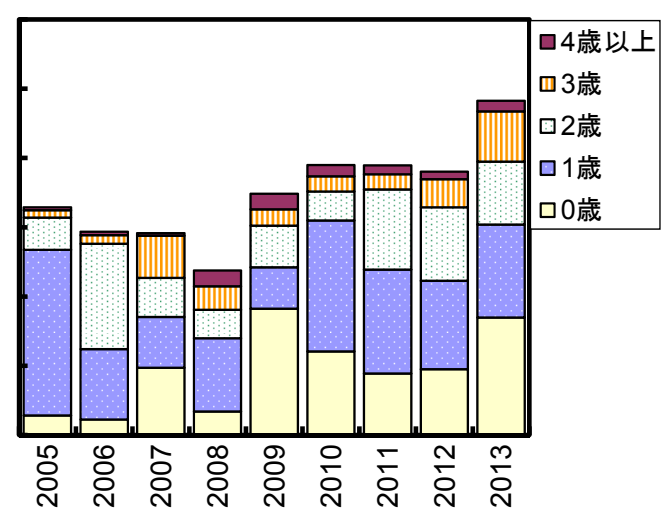


				$\geq 100$	$\geq 300$
				50~100	150~300
				50	150
					$\geq 38$
					38 (=Blimit)

資源尾数 (100万尾)



資源量 (千トン)



7

➤ 2009

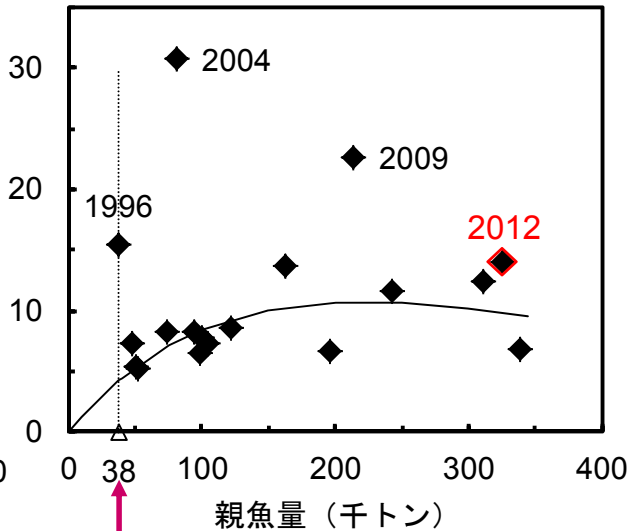
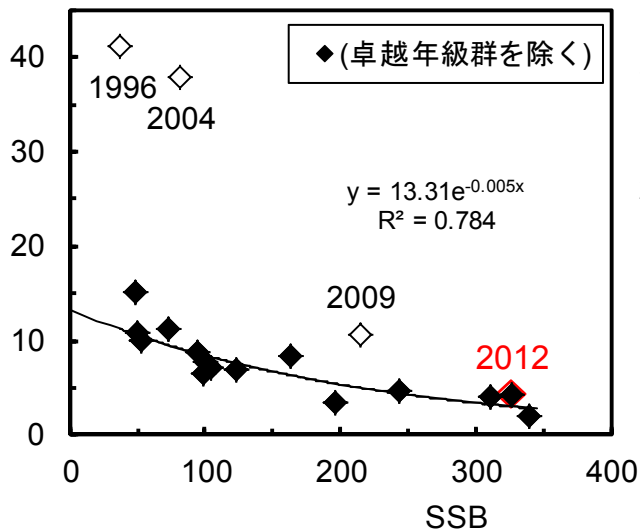
➤ 2011

2004

2013

# Blimit 2012

RPS(尾/kg)



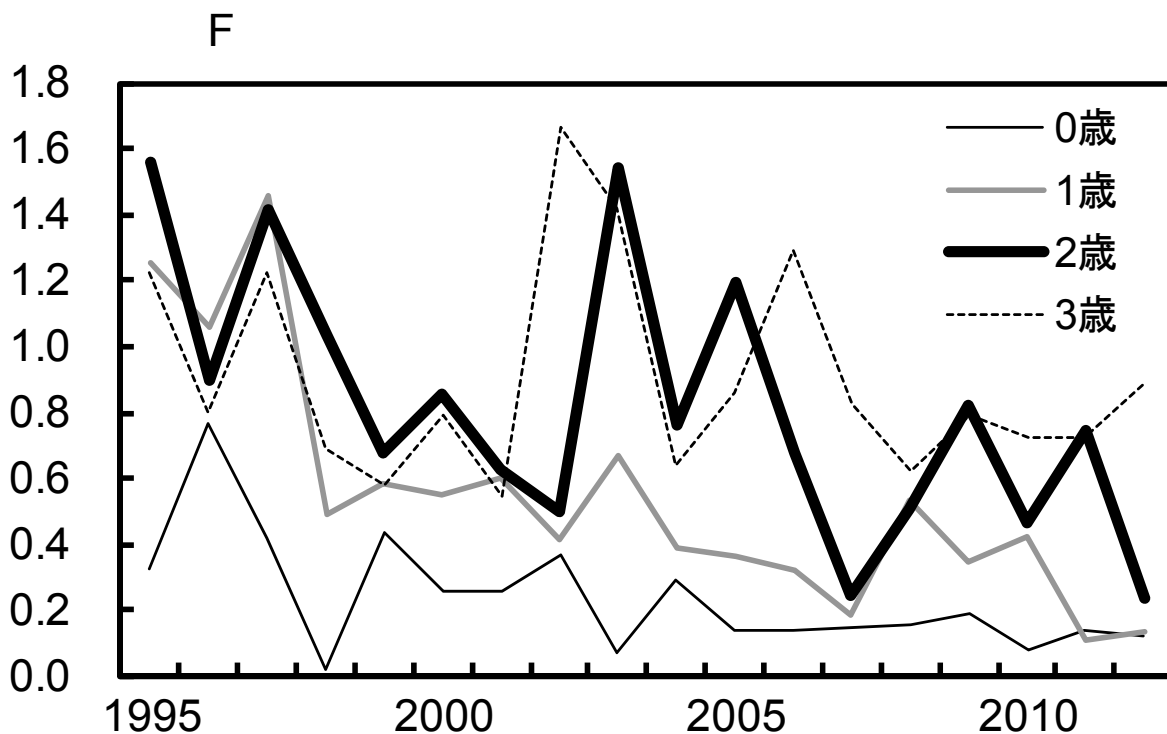
⋮  
⋮

8

(RPS)

1996 2004 2009

## F

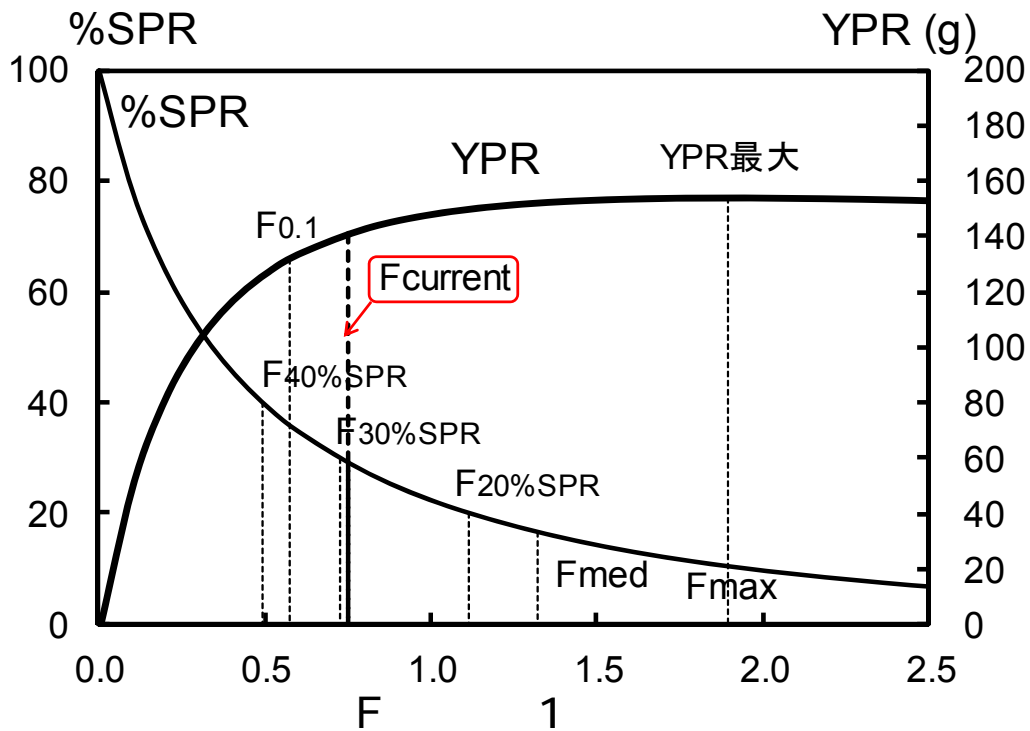


0 1



SPR YPR

Fcurrent



➤ Fcurrent F40%SPR FQ1 Fmed

➤

2014 ABC

✓				
✓ 2012	77.9	32.6	Blimit	
✓	Fcurrent		Fmed	
✓ 2011		12.4		
✓ 2012		14.0		
✓ 2013			23.5	
	⇒2013	98.6	37.0	
		ABC	1	1
			1	1

ABC

➤ F Fcurrent , F30%SPR, F20%SPR

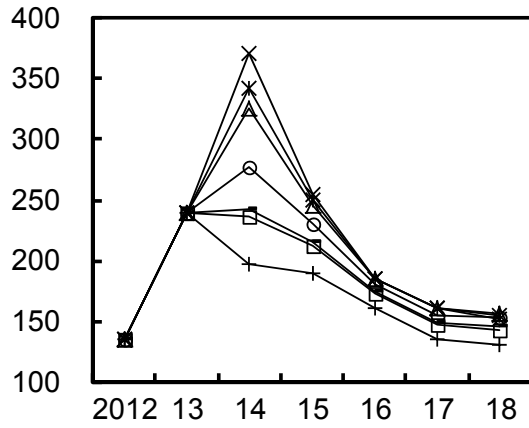
➤ F2013 Fcurrent 2008 2012

➤ 2013 0

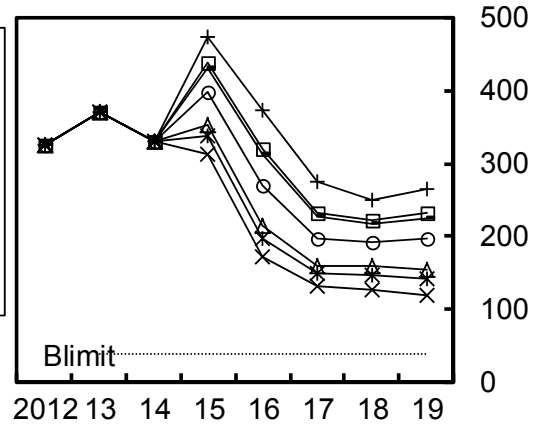
➤ 2014 RPS

# F

漁獲量 (千トン)



親魚量 (千トン)



SSB-RPS



F<sub>current</sub>

1.5

F<sub>20%SPR</sub>

2014

- $\geq$  Blimit

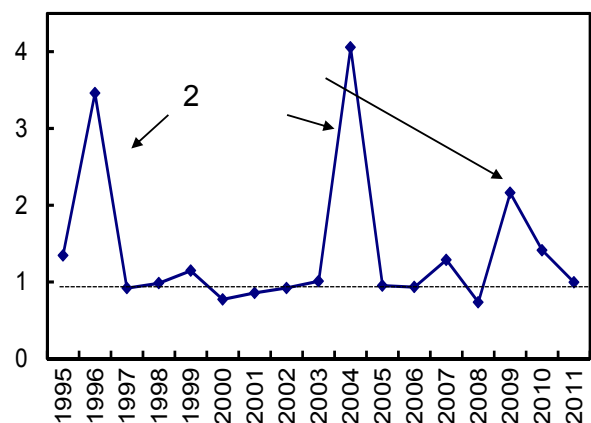


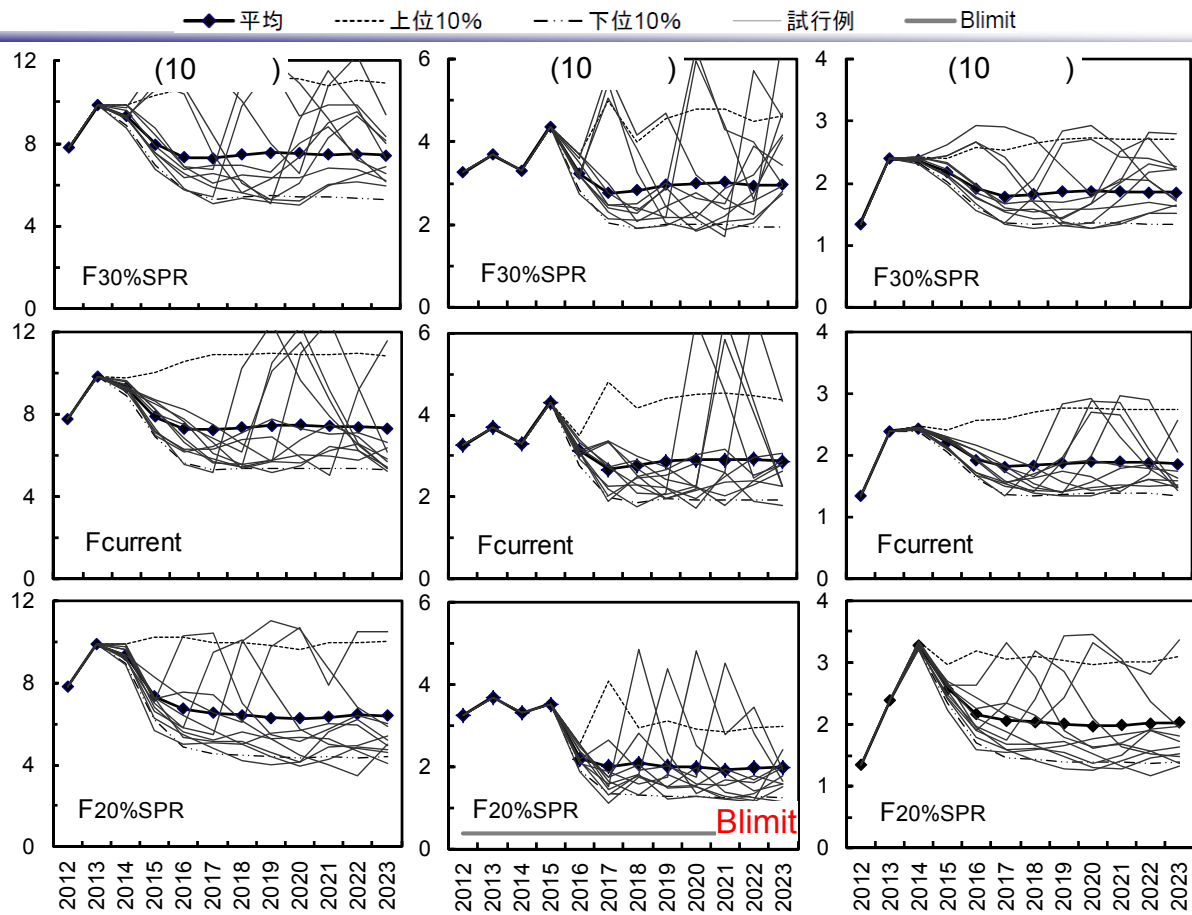
(RPS)

- Blimit

→ Blimit

RPS





## ABC

	F	F (%)	2014 ABC			Blimit	Blimit (%)	2014 ABC
			5	5	5			
F30%SPR *	0.48	25	131~	201	25%	100%	236	
Fcurrent *	0.50	26	133~	205	23%	100%	243	
Blimit	0.74	35	141~	243	10%	100%	326	
F20%SPR *	1.49Fcurrent		311					

➤ 5 2015 80  
 ➤ \*  
 ➤  
 ➤ 5 2019  
 2012

# ABC

			F	( )	ABClimit ( )	ABCtarget ( )	( )
2012	2011	F30%SPR (F13%SPR*)	1.01	480	203	176	-
2012	2012	(F13%SPR*)	0.97	726	301	261	-
2012	2013	(F13%SPR*)	1.05	779	341	297	135
2013	2012	F20%SPR	0.68	726	234	198	-
2013	2013	F20%SPR	0.74	986	321	274	-
2011	2012	TAC					
*	%SPR		2012	2011	F30%SPR	F	
	F13%SPR		F13%SPR				

2012

ABC

2013

ABC

✓ 2011

✓

2013